



COURSE & SYLLABUS INFO

DATA SCIENCE BOOTCAMP PROGRAM

Part-time Schedule

ABOUT THE PROGRAM

OVERVIEW

WeCloudData's Data Science Bootcamp is a one-stop service program for you to acquire the essential data science skills, gain professional experience through real client projects and prepare for data careers.

The program is intensive, rigorous, and practical by design. Led by experienced instructors, you will learn the cutting-edge technologies including Python, machine learning, deep learning, big data, and cloud computing through a unique hands-on pedagogy. The program is not just about learning, it helps you break into data industry with our extensive career services – portfolio building, resume revision, mock interviews, networking events, and 1-on-1 career coaching throughout the program that leads to your success.

WHO IS IT FOR?

University/College Graduate

who are looking for the first job

Your college degree does not give you enough experiences and skills to get a data job

Career Switchers

who are looking for a smooth transition

We have proven success in helping professionals with unrelated background transition into data science careers

Job Seekers

who want a systematic approach to polish DS skills and project portfolios

Taken many courses but still struggling to get an interview? Let us help you focus on the most important skills to build

Masters/PhDs

who lack industry experience

Let us help you gain real-world experience through our trainee program and teach you the necessary business/ communications skills to succeed in career transition

PROGRAM DETAILS

24+1 WEEKS

300+ hours

PRE-BOOTCAMP SERVICES

get you ready for the program

10 INDUSTRY SPEAKERS

network with industry professionals

FLEXIBLE OFFERING

Online Live or On Campus

TOP-NOTCH INSTRUCTORS

learn from the experts

4 CAPSTONE PROJECTS

gain hands-on experiences

LEARNING SCHEDULE

LECTURES

Wednesday 6:30pm - 9:30pm EST

Saturday 9:00am - 12:00pm EST

TA-LED LABS

Saturday 1:00pm - 5:00pm EST

OFFICE HOURS

Monday, Tuesday, Thursday:

7:00pm - 8:00pm EST

Friday: 7:00pm - 8:00pm EST
(Leetcode)



I attended WecloudData's Data Science Diploma program starting in May 2020. It was an extremely uncertain period due to COVID and I wanted to be absolutely certain that I chose the right training option in order to transition towards a DS career.

The curriculum was super intense and provided me exposure to all the different aspects of a data science life-cycle through a variety of in-demand tools such as SQL, Python, Tableau, and AWS. The faculty and teaching assistants were supportive and always available to answer any doubts around the clock. They helped arrange sessions with industry experts and WeCloud alumni who provided us with important career tips. I definitely recommend the program for anyone trying to break into this field.

- Karan Singh -

RETHINK EDUCATION INVESTMENT

	Master of DS or Master of Managment Analytics	WeCloudData Bootcamp (Full-time)	WeCloudData Bootcamp (Part-time)
Program Duration	12 months	3-6 months	6+ months
Tuition	\$41,000	\$15,400	\$10,000
Avg Base Salary	\$75,000	\$83,000	\$83,000
Salary Range	\$48K - \$110K	\$55K - \$110K	\$55K - \$110K

Unlike universities and traditional bootcamps, at WeCloudData your journey starts rather than ends of 6 months

Shorter time to job offer
1/4 of the tuition
Higher base salary

PROGRAM TIMELINE

1 WEEK	Orientation	4 WEEKS	ML Advanced
3 WEEKS	SQL	2 WEEKS	Captone Project #3
3 WEEKS	Python for Data Science	5 WEEKS	Big Data
2 WEEKS	Captone Project #1	3 WEEKS	Captone Project #4
5 WEEKS	Machine Learning (ML)	2 WEEKS	Career Workshops
2 WEEKS	Captone Project #2		

PROGRAM SERVICES

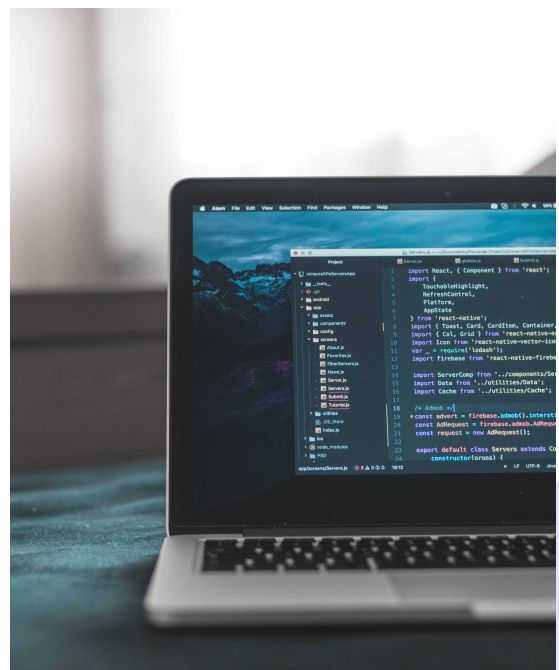


PRE-BOOTCAMP SERVICES

One-on-one meeting with instructors to design a personalized learning path that fits your goal and background

Over 30 hours of learning materials, labs, and exercises

to get you familiar with fundamental data knowledge and skills including SQL and Python program, applied math for machine learning, and machine learning theories.



Self-paced learning guided and powered by our unique learning management system

where you can watch lectures, work on your codes, test your progress with live quizzes, track your learning journey, and communicate with instructors and TA's.

CURRICULUM

Semester 1 - 14 weeks

<p>WEEK 0</p> <p>Orientation</p> <ul style="list-style-type: none"> • Orientation Week • Introduction to Data Science • Introduction to Linux Command • Customer Journey Mapping 	<p>WEEK 1</p> <p>SQL & Databases</p> <ul style="list-style-type: none"> • Introduction to database systems • Introduction to SQL • Functions and Aggregations
<p>WEEK 2</p> <p>SQL & Databases</p> <ul style="list-style-type: none"> • Subqueries & Joins • Analytic Functions • SQL Project 	<p>WEEK 3</p> <p>SQL & Databases</p> <ul style="list-style-type: none"> • Complex SQL Queries • Project Presentations • SQL Leetcode Quiz
<p>WEEK 4</p> <p>Python Programming</p> <ul style="list-style-type: none"> • Introduction to Programming • Python Programming Logic • Python Data Types 	<p>WEEK 5</p> <p>Python Programming</p> <ul style="list-style-type: none"> • Python Functions & Modules • Class & OOP • Working with PyCharm • Version control with Github
<p>WEEK 6</p> <p>Python for Data Science</p> <ul style="list-style-type: none"> • Introduction to Pandas DataFrame • Advanced Pandas Operations • Python Leetcode Quiz 	<p>WEEK 7</p> <p>Python for Data Science</p> <ul style="list-style-type: none"> • Data Visualizations with Python • Capstone Project #1: Data Science
<p>WEEK 8</p> <p>Python for Data Science</p> <ul style="list-style-type: none"> • Capstone Project #1: Data Science • Capstone Project #1 Presentation • SQL Leetcode Quiz 	<p>WEEK 9</p> <p>Machine Learning</p> <ul style="list-style-type: none"> • Math for ML: Statistics • Math for ML: Linear Algebra • Math Interview Practice
<p>WEEK 10</p> <p>Machine Learning</p> <ul style="list-style-type: none"> • Introduction to Machine Learning • Exploratory Analysis (EDA) • Regression Analysis 	<p>WEEK 11</p> <p>Machine Learning</p> <ul style="list-style-type: none"> • Classification - Logistics • Classification - Decision Trees • Feature Selection
<p>WEEK 12</p> <p>Machine Learning</p> <ul style="list-style-type: none"> • Model Evaluation • Classification - Ensemble Models (Random Forest) • Classification - Boosting Trees 	<p>WEEK 13</p> <p>Machine Learning</p> <ul style="list-style-type: none"> • Classification - Feature Engineering & Pipelines • Classification - Model Interpretation
<p>WEEK 14</p> <p>Capstone Project #2</p> <ul style="list-style-type: none"> • Capstone Project #2: Machine Learning 	<p>STUDY BREAK</p> <p>Capstone Project #2</p> <ul style="list-style-type: none"> • Capstone Project #2: Presentation

CURRICULUM

Semester 2 - 16 weeks

<p>WEEK 15</p> <p>Advaced Machine Learning</p> <ul style="list-style-type: none"> Unsupervised Learning: K-Means Clustering Dimension Reduction 	<p>WEEK 16</p> <p>Advaced Machine Learning</p> <ul style="list-style-type: none"> NLP Introduction: Text Processing Text Embedding
<p>WEEK 17</p> <p>Advaced Machine Learning</p> <ul style="list-style-type: none"> Deep Learning: Neural Networks Computer Vision: CNN 	<p>WEEK 18</p> <p>Advaced Machine Learning</p> <ul style="list-style-type: none"> NLP: Recurrent NN, LSTM NLP: BERT
<p>STUDY BREAK</p> <p>Capstone Project #3</p> <ul style="list-style-type: none"> Capstone #3 - Machine Learning and Data Visualization Challenge (Tableau/PowerBI) 	<p>WEEK 19</p> <p>Capstone Project #3</p> <ul style="list-style-type: none"> Capstone #3 - Machine Learning and Data Visualization Challenge (Tableau/PowerBI) Capstone #3 - Presentation
<p>WEEK 20</p> <p>Big Data</p> <ul style="list-style-type: none"> Cloud: AWS EC2 Cloud: AWS S3/Redshift 	<p>WEEK 21</p> <p>Big Data</p> <ul style="list-style-type: none"> Big Data: Introduction to Data Lake Big Data: Hadoop/Hive/EMR
<p>WEEK 22</p> <p>Big Data</p> <ul style="list-style-type: none"> Big Data: Apache Spark Intro Big Data: Spark DataFrame 	<p>WEEK 23</p> <p>Big Data</p> <ul style="list-style-type: none"> Big Data: Distributed Machine Learning Algorithms Big Data: Spark ML Library
<p>WEEK 24</p> <p>Big Data</p> <ul style="list-style-type: none"> ML Pipelines with Amazon SageMaker Real-time Prediction with Kinesis and Spark Streaming 	<p>STUDY BREAK</p> <p>Capstone Project #4</p> <ul style="list-style-type: none"> Agile Project Management (Jira/Confluence/Scrum) Capstone #4 - Building End-to-end Big Data Pipeline
<p>STUDY BREAK</p> <p>Capstone Project #4</p> <ul style="list-style-type: none"> Capstone #4 - Building End-to-end Big Data Pipeline 	<p>STUDY BREAK</p> <p>Capstone Project #4</p> <ul style="list-style-type: none"> Capstone #4 Building End-to-end Big Data Pipeline
<p>WEEK 25</p> <p>Career Workshop</p> <ul style="list-style-type: none"> Final Capstone Presentation Career Workshop #1 <ul style="list-style-type: none"> Job search strategies Resume building Real Interview Practice 	<p>WEEK 26</p> <p>Career Workshop</p> <ul style="list-style-type: none"> Career Workshop #2 <ul style="list-style-type: none"> Behavioral interview tips Career Workshop #3 <ul style="list-style-type: none"> Technical interview tips Real Interview Practice

ADMISSION PROCESS



Our program advisor will have a 1-on-1 meeting with you to see if the program is a good fit for you. There is no application fee. It takes about 30 minutes

There will be a technical test and an interview. Applicants spend up to 2 hours on the challenge.

Our admission officer will work with you directly to help you fill out a contract, pay \$500 deposit and assist you to apply any kind of grant and finance options.

Starting ahead will gain you more experience and competence. Research shows that preview and preparation account for 73.7% success in academic achievement of university students.

TUITION, GRANTS AND FINANCE OPTIONS

\$10,000
CAD

As an Ontario registered private career college, you can apply for student line of credit from BMO with lower interest rate.

GRANT

With Ontario Second Career grant you may be eligible for up to \$28,000 for costs including: tuition, books, manuals, transportation, basic living allowance, child care.

CONTACT US

Contact our program advisor, Amir, for more information
amir.asadian@weclouddata.com

